



- Viewworks Product intro.

● ●
MEDICAL IMAGING Available Product Lineup

Static

VIVIX-S&N Series(Both CsI and GADOX scintillator types are available)

APPLICATIONS

General radiography,
Equine,
ENT,
Cephalometry



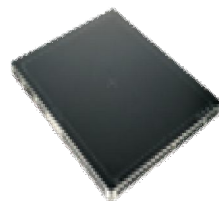
**VIVIX-S
1717S**
17 x 17 inches



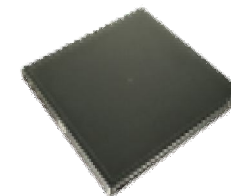
**VIVIX-S
1417S**
14 x 17 inches



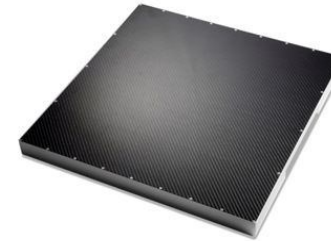
**VIVIX-S
1417W**
14 x 17 inches



**VIVIX-S
1012N**
10 x 12 inches



**VIVIX-S
1717N**
17 x 17 inches



VIVIX-S 1717S
17 x 17 inches

VIVIX-S 1717S (FXRD-1717S)

- VIVIX-S 1717S Fixed panels are an ideal solution for **retrofitting new or existing X-ray equipment at affordable cost.**
- Application: General radiography
- Model Name: FXRD-1717SA(CsI) / FXRD-1717SB (GADOX)
- It is a high-performance fixed DR flat panel Detector with **AED Technology**
 - No need for connection to a X-ray generator
 - This Fixed panel may be interfaced directly with X-Ray generators if required;
 - Stable and Reliable Automatic Exposure Detection (AED)
- High Spatial Resolution with 140um Pixel Array
- The active **9.4Mega-pixel sensor** of VIVIX-S ensures high image quality to meet market demands.
- Simple and easy integration with all kinds of digital radiography systems.
- VIVIS 1717 fixed flat panel package includes: 1) 1717S detector, 2) Power Supply Unit (PSU), 3) VxVue acquisition and viewer S/W and 4) cables



VIVIX-S 1417S
14 x 17 inches

VIVIX-S 1417S (FXRD-1417S)

- VIVIX-S 1417S tether panels offers 14"x 17" **cassette sized coverage area**.
- Application: General radiography
- Model Name: FXRD-1417SA(CsI) / FXRD-1417SB (GADOX)
- It is a high-performance fixed DR flat panel Detector with **AED Technology**
 - No need for connection to a X-ray generator
 - This tether panel may be interfaced directly with X-Ray generators via system control unit
 - Stable and Reliable Automatic Exposure Detection (AED)
- High Spatial Resolution with 140um Pixel Array
- The size is the same as a film or a CR cassette
 - It is an **optimized solution** for upgrading conventional X-ray system.
- Simple and **easy integration** with all kinds of digital radiography systems.
- VIVIS 1417 tethered flat panel package includes: 1) 1417S detector, 2) System Control Unit(SCU), 3) VxVue acquisition and viewer S/W and 4) cables







VIVIX-S 1417W
14 x 17 inches

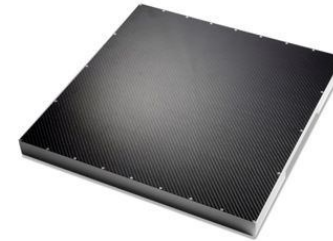
VIVIX-S 1417W (FXRD-1417W)

- VIVIX-S 1417W wireless panels may be applied to any existing machines.
 - It is a true cassette-sized panel that offering an **easy transition** from a cassette based CR or conventional film-based solutions.
- Application: General radiography
- Model Name: FXRD-1417WA(CsI) / FXRD-1417WB (GADOX)
- It is a high-performance fixed DR flat panel Detector with **AED Technology**
 - Stable and Reliable Automatic Exposure Detection
- The detector can save up to 100 images at its **on-board memory**.
 - All the saved images can be transmitted after resuming communication with the detector.
- **Inside AP** enables customers to take X-ray images directly to workstation via Wi-Fi connection.
- VIVIS 1417 wireless flat panel package includes: 1) 1417W detector, 2) System Control Unit(SCU), 3) VxVue acquisition and viewer S/W and 4) cables 5) Three (3) batteries, 6) Charger
- The battery charger can recharge up to 3 batteries at the same time **within 2 hours**.
 - Additional tether cable connection to the detector can also recharge battery (Without removing the battery)

MEDICAL IMAGING

Product name	VIVIX-S	VIVIX-S Portable, Wired	VIVIX-S Portable, Wireless
			
Application	General Radiography for Human and Veterinary		
Model	FXRD-1717SA/SB	FXRD-1417SA/SB	FXRD-1417WA/WB
Technology	FPD : a-Si TFT with PIN diode		
Dimensions	470 (H) × 470 (V) × 35 (D) mm	384 (H) × 460 (V) × 15 (D) mm	384 (H) × 460 (V) × 15 (D) mm
Active Image size	430 (H) × 430 (V) mm (17"x17")	358 (H) × 430 (V) mm (14"x17")	358 (H) × 430 (V) mm (14"x17")
Scintillator	CsI or Gadox		
Pixels	3072 × 3072 pixels	2560 × 3072 pixels	2560 × 3072 pixels
Pixel pitch	140 μm x 140 μm		
A/D conversion	14 bit, 16,384 grayscale		
Resolution	Min. 3.5 line pair/mm		
Network interface	Gigabit Ethernet (1000BASE-T)		
Image Acquisition time	1 seconds	1.5 seconds	Wireless 4.5 seconds (preview 2 sec) Wired 2 seconds
X-ray voltage range	40 ~ 150 kVp		
X-ray generator interface	Auto trigger: AED (Automatic Exposure Detection) mode / Line trigger: DR trigger mode		
Power	DC +24 V, 0.8 A	DC +24 V, 0.5 A	Lithium Ion Polymer (4 hours without sleep mode)
Weight	11 kg	3.1 kg (FXRD-1417SB, Gadox) 3.2 kg (FXRD-1417SA, CsI)	3.3kg (FXRD-1417WB, Gadox) 3.4kg (FXRD-1417WA, CsI)

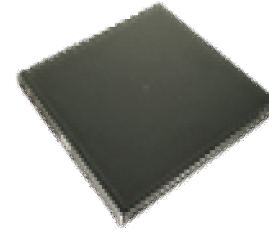
* Specifications are subject to change without prior notification.



VIVIX-S 1012N
10 x 12 inches

VIVIX-S 1012N (FXRD-1012N)

- VIVIX-S 1012N is new portable panel that can be adapt in various applications with active area of 10"x12"
- Application: ENT, Equine, cephalometry
- Model Name: FXRD-1012NAW(CsI) / FXRD-1012NBW (GADOX)
- It is a high-performance fixed DR flat panel Detector with **AED Technology**
 - Stable and Reliable Automatic Exposure Detection (AED)
 - With this AED function, users can perform examination with any kinds of X-ray systems.
- High Spatial Resolution with **124um Pixel** Array
 - Its Wi-Fi communication system provides **fast wireless transfer speed** in high resolution.
- **Inside AP** allows users to directly connect to the detector with portable workstation such as laptops, tablet PCs, and even smart phones.
- VIVIS 1012N small flat panel package includes: 1) 1012N detector, 2) System Control Unit (SCU), 3) VxVue acquisition and viewer S/W and 4) cables 5) Two (2) batteries 6) charger



VIVIX-S 1717N
17 x 17 inches

VIVIX-S 1717N (FXRD-1717N)

- VIVIX-S 1717N is the new slim portable cassette-sized flat panel detector for digital radiography with active area of 17"x17"
 - Both **Wireless and wired** models are available for this model.
 - Compared to existing 1717 fixed models, it gives more advantage to **upgrade** the conventional systems since **further tray bucky modification** is not required.
- Model Name: FXRD-1717NA(CsI) / FXRD-1717NB (GADOX)
- Application: General radiography
- It is a high-performance fixed DR flat panel Detector with **AED Technology**
 - No need for connection to a X-ray generator
 - Stable and Reliable Automatic Exposure Detection (AED)
- High Spatial Resolution with 140um Pixel Array
- Simple and easy integration with all kinds of digital radiography systems.
- VIVIS 1717N thin sized flat panel package includes: 1) 1717N detector, 2) System Control Unit(SCU), 3) VxVue acquisition and viewer S/W and 4) cables 5) four (4) batteries 6) charger

Flat Panel Detectors (for general radiography)

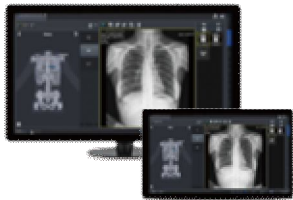
Product name	ViVIX-S 1717N	ViVIX-S 1012N
		
Application	General Radiography for Human and Veterinary	General Radiography for Human and Veterinary
Technology	FPD : a-Si TFT with PIN diode	FPD : a-Si TFT with PIN diode
Dimensions	460 × 460 × 15 mm	287 × 350 × 15 mm
Pixels	3,072 × 3,072	2,048 × 2,560
Pixel pitch	140 × 140 μm	124 × 124 μm
A/D conversion	65,536 greyscale (16 bit)	65,536 greyscale (16 bit)
Resolution	3.5 lp/mm	4 lp/mm
Network interface	Gigabit Ethernet / IEEE 802.11n (2.4GHz/5GHz)	Gigabit Ethernet / IEEE 802.11n (2.4GHz/5GHz)
Image Acquisition	Wireless 3 sec. Wired 1 sec.	Wireless 3 sec. Wired 1 sec.
X-ray voltage range	40 ~ 150 kVp	40 ~ 150 kVp
Generator interface	Auto trigger: AED mode Line trigger: DR trigger	Auto trigger: AED mode Line trigger: DR trigger
Power	DC +24V, 0.8A Lithium Ion Polymer	DC +24V, 0.7A Lithium Ion Polymer
Weight	4.2 kg (FXRD-1717N wired) 4.5 kg (FXRD-1717N wireless including battery)	2.1 kg (FXRD-1012NBW, Gadox) 2.2 kg (FXRD-1012NAW, Csl)

MEDICAL IMAGING In-house S/W description

Static

VX_{VUE}

SOFTWARE SOLUTIONS



DR acquisition viewer with simple workflow

- Easy operation and high throughput
- User-friendly touch GUI
- Image enhancement functions : Grid Line Removal, Auto Stitching, etc.
- DICOM 3.0 Compatible : Send, Print, MWM, MPPS, etc.
- Equipment interface : generator, U-arm, Collimator, DAP, etc.
- Various operation modes : human, veterinary, vehicle, equine, etc.
- Study management : Exposure Index, Statistics, etc.
- Auto-Cropping, Auto-Labeling, Auto-Rotation
- Customized function and various theme

XIPL

Advanced X-ray image processing library

- Fine-tunable parameters
- Image check right after parameter adjustment
- High tolerance for radiation exposure variations
- Useful functions : Auto Cropping, Auto Grid Suppression, Auto Defect Correction

QXLink 3

Streamlined PACS

- More than 60 advanced measurement tools including chiropractic
- Virtual surgery tools for preoperative planning
- Flexible layout and full size pages for DICOM Print

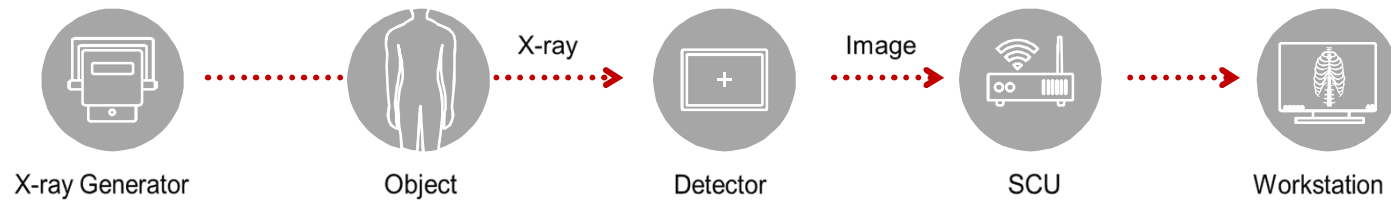
MEDICAL IMAGING Specialized Features

Static

anytime™ | Automatic Exposure Detection

TECHNOLOGIES

Stable and reliable AED(automatic Exposure Detection) function enables users to operate the detector without any wire connection or electronic interface with X-ray generator



inside AP™ | Wireless Access Point

- Wireless access point inside the detector makes it truly portable
- Users can operate the detector through tablet PC or laptop
- The detector can save the achieved images up to 100 / 200

